

Increased Accuracy and Time Savings

- Eliminate variability in standard concentrations for calibration curve accuracy
- Lock down methods to reduce opportunity for user error
- Maximize throughput
- Lower costs/sample—dramatic time, labor, and solvent savings

Demand for Accurate Measurements

The Microlab 600 Advanced Version has features that will allow you to lock down your process, so even when under oath, you can be confident in your methodology. The Microlab 600 Diluter/Dispenser makes measurements **more reliable**.

Less User Variation with the MicroLab 600 Diluter/Dispenser

Eliminate variation between users, inconsistencies with different solution types, and performance variation at different elevations with the MicroLab 600.

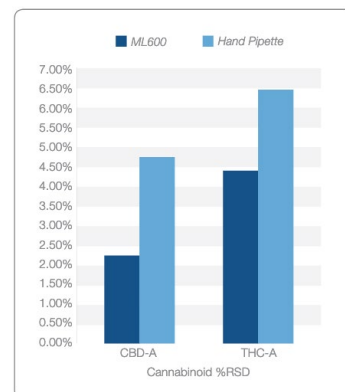


Fig. 1: % Relative Standard Deviation testing comparison between the ML600 and traditional hand pipetting methods for CBD-A and THC-A. The Microlab 600 can reduce %RSD by more than 50% compared to hand pipetting methods.



50 µL ClickSure Tip



1 mL ClickSure Tip

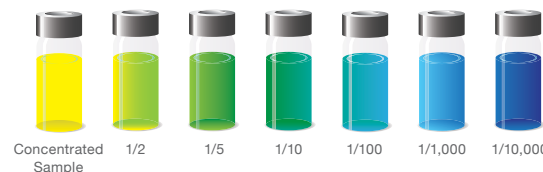
HAMILTON 600 DILUTERS & DISPENSERS ORDERING INFORMATION	
PART NO	DESCRIPTION
MICROLAB 600 DILUTERS	
ML615-DIL	MicroLab 615 Basic Dual Syringe Diluter
ML625-DIL	MicroLab 625 Advanced Dual Syringe Diluter*
ML615-CNT	MicroLab 600 Basic Continuous Dispenser
ML625-CNT	MicroLab 600 Advanced Continuous Dispenser
MICROLAB 600 DISPENSERS	
ML615-DIS	MicroLab 615 Basic Dual Syringe Dispenser
ML625-DIS	MicroLab 625 Advanced Dual Syringe Dispenser*
DISPOSABLE TIP HAND PROBE	
ML625-DTHP	Microlab 600 Diluter with Disposable Tip Hand Probe
CLICKSURE TIPS FOR DTHP	
235537	50 µL, non-sterile ClickSure Tips, 960 tips, racked
235543	50 µL, non-sterile ClickSure Tips, 960 tips, bulk
235539	1 mL, non-sterile ClickSure Tips, 960 tips, racked
235545	1 mL, non-sterile ClickSure Tips, 960 tips, bulk

*Advanced Systems come with 2 GB SD card with advanced wizards, programs. Basic models can be upgraded to advanced software with purchase of SD card.

More configurations, plus disposable tip versions are available for all systems. View website for more options

How Does it Work?

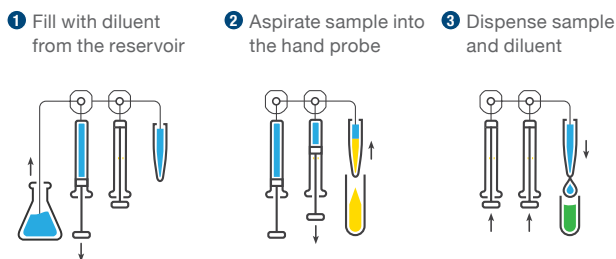
- Step 1. Program sample and diluent volume.
- Step 2. Trigger the hand probe to fill left syringe with diluent and aspirate sample into the hand probe with the right syringe.
- Step 3. Trigger the hand probe to dispense the sample and then the diluent into the vial to complete the dilution and wash the tube for the next sample.



The Microlab 600's Dual Syringe Diluter configuration uses two syringes to create up to a 1:50,000 dilutions in a single step

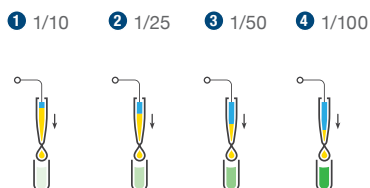
Dilution Wizard

Dual Syringe Dilution



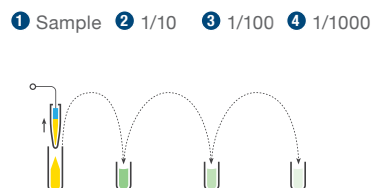
Serial Dilution (Programmed)

Repeat the steps for single or dual dilution with varying dilution ratios and the same final volume.

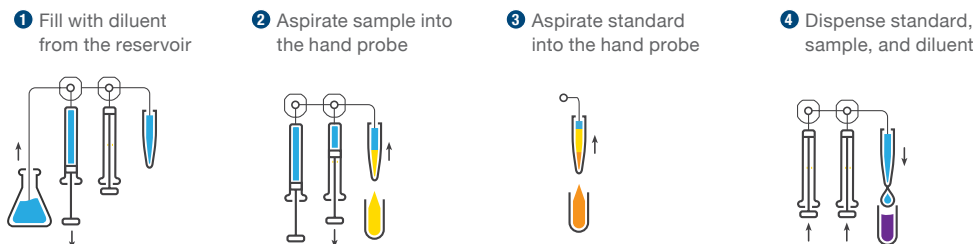


Serial Dilution (Tube to Tube)

Repeat the steps for single or dual dilution and use the resulting dilution as the sample for the next dilution.

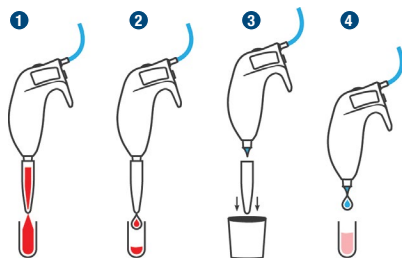


Multi Sample Dilution (or Internal Standard Addition)



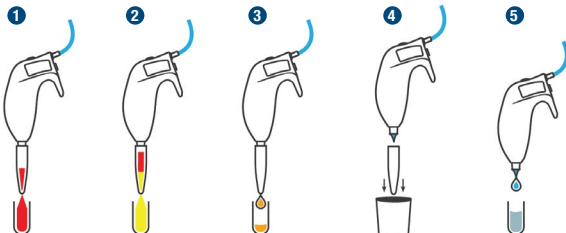
Dilution Options

Single Sample Dilution



- 1 The trigger is pressed and the sample is aspirated into the tip using the right syringe while diluent is drawn into the left syringe.
- 2 The trigger is pressed again and the sample is dispensed from the tip.
- 3 The tip is ejected.
- 4 Another trigger dispenses the diluent to complete the dilution.

Multi-Sample Dilution



- 1 Aspirate Sample 1 into ClickSure Tip.
- 2 Aspirate Sample 2. Repeat with additional solutions.
- 3 Dispense Samples.
- 4 Discard ClickSure Tip.
- 5 Dispense Diluent.